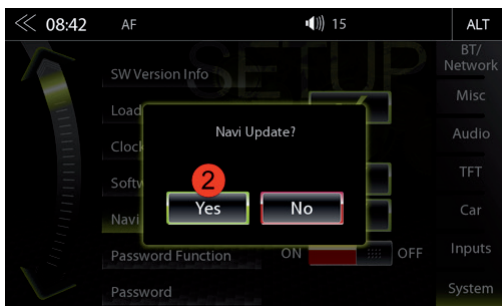


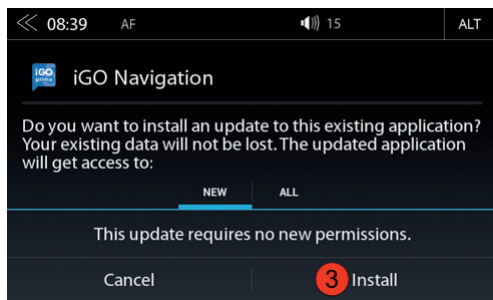
NAVIGATION SOFTWARE INSTALLATION ON Z-N326 + Z-N426 DEVICES

Before you can use the Z-N326-SDFEU or Z-N426-SDFEU navigation software supplied on microSD card, the Android device (Z-N326 + Z-N426) must be prepared by installing a software.

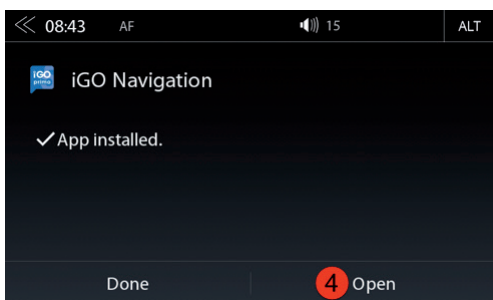
- a. Insert the provided microSD card of your navigation software bundle into the respective slot of the device. Turn on the device.
- b. Enter the device setup menu [Setup]. Tap on [Device Setup] → [System] → [Navi Update] (illustration 1) → [YES] (illustration 2).



- c. Tap on the "iGO.apk" to open the software installation page.
- d. Tap on [Install] to start the standard installation process (illustration 3).



- e. The software installation will run in a step-by-step mode. A software installation status bar allows you to track progress. The complete update process takes approx. 30 ~ 60 seconds.
- f. Finally, tap on the [Open] icon to check if the installation was successful. Device should show navigation loading mode. Now close the navigation software, turn off the device and read the info given under "Sat-Fix" below.



FIRST NAVI START-UP (SAT FIX PROCESS)

- › After the device install is completed make sure, the vehicle is located outdoors under free sky. There should be no objects above vehicle affecting GPS reception (trees, tall buildings etc.).
- › Tap on the navigation icon in the main menu to start the navigation mode. Tap on "Show Map" to initiate the "search GPS" process.
- › Allow 3 to 5 minutes of time to for the creation of the so called Sat-Fix. During this period, the vehicle must not move nor drive!

1 YEAR MAP UPDATE SUBSCRIPTION

After the activation of the navigation license by GPS reception and a subsequent drive of >10km, user / owner is entitled to upgrade the map content by downloading the latest Full-EU map package via Naviextras update server. The MUPS service is limited to map packages available on Naviextras which are newer, than the version found in the delivery scope of the device. The free of charge map update is valid for 365 days from the day of the license activation.

Update Requirements

- 1) PC or notebook with newer Windows OS, equipped with SD card reader
- 2) Already activated 16GB navigation microSD card
- 3) Naviextras Toolbox software installed on PC or notebook.
- 4) Broadband internet connection of min. 1MB/s.

Online Updates (Map Content + Bugfixes)

Naviextras Toolbox is a Windows utility, able to establish the server access to the Naviextras portal.

- Before you update the navigation content of your microSD card, always download, install and use the latest Toolbox software.
- Before you can download content and updates you are asked for setting up a user account on the Naviextras portal. Once the Toolbox software has installed a login window pops open to indicate readiness for user account setup.
- With the user account ready make sure the first step is backing up the microSD card content prior to any content update. Data backup is offered automatically with Toolbox recognizing a valid nav license on the microSD card.
- Do not start update before you have not created a backup. The backup allows you to restore original map data of the package, which is a welcome help to cope with update or installation problems, which would otherwise become costly software restore processes.
- Important: When a free or pay type content update was installed on the microSD card, the following two steps must be completed to re-activate the license:

- 1) Insert the memory card into your naviceiver and start the navigation. Shut down device, remove the microSD card.
- 2) Start Toolbox and connect the card to your PC or notebook and follow the instructions of the software (activation of license).